

# E600 Series

**THE WORLD'S FIRST  
60-FOOT ELECTRIC LIFT**



**Exclusive JibPLUS®  
Boom for Extra  
Versatility**



**Low GVW for  
Weight Sensitive  
Applications**



**Superior Off-Slab  
Performance**

**E600J  
M600J  
E600JP  
M600JP**

**[www.jlg.com](http://www.jlg.com)**

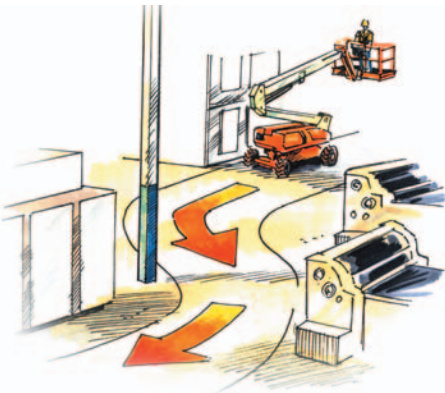
The JLG logo, consisting of the letters "JLG" in a bold, orange, sans-serif font with a registered trademark symbol.

# E600 Series

## The Inside Story

Whether in aviation, automotive, warehousing, food & beverage, petrochemical or institutional applications, JLG's E600 Series electric boom lifts help you meet a wide variety of industrial applications. You get 60 feet (18.29 m) of high-reach productivity with the added bonus of zero emissions, reduced noise levels and standard non-marking tires for optimum indoor productivity. Plus, with the QuikCharge GenSet option and optional JibPLUS® boom models, you'll have all the power and positioning versatility you need.

- **Zero Emissions\***
- **Low Noise Operation\***
- **15,000 lbs. (6,804 kg) gross vehicle weight with over 43 ft. (13.11 m) of reach**
- **Low-mount platform for access in confined areas**



### Indoor Maneuverability

Enjoy improved access up, over and around obstacles.



### Customer-Preferred Controls

All E600 Series aerial work platforms share JLG's popular control configuration, allowing for ease of operation.

\*E600J and E600JP only



Standard Non-Marking Tires

# The Outdoor Advantage

With JLG's exclusive Automatic Traction Control (ATC), optional all-wheel drive, 12 in. (30 cm) ground clearance, and non-marking all-terrain tires, the E600 Series provides superior traction off-slab, where other electric boom lifts can't go. Plus, with the optional on-board generator for quick recharging and a standard oscillating axle for travel over varying terrain, the E600 Series will take you higher and farther than any electric boom lift could before!

- **Rugged design with oscillating axle**
- **Automatic Traction Control (ATC)**
- **12 in. (30 cm) ground clearance**
- **Optional on-board generator for quick recharging**

## Standard Oscillating Axle

The E600 features a standard oscillating axle for operator comfort and smoother operation over varying terrain.



## Exclusive JibPLUS® Boom Option

JLG's JibPLUS® boom takes you in a new direction — side-to-side. It provides a 180° range of side-to-side movement for the most versatile positioning capability available today.



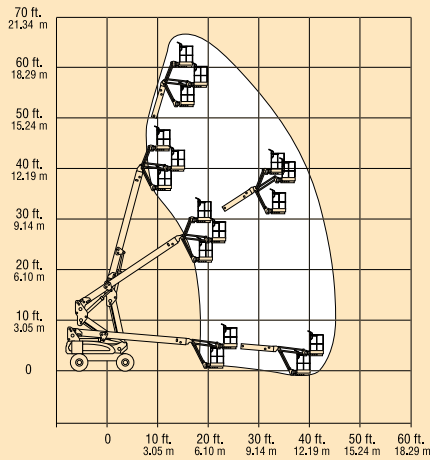
## Rough Terrain Capabilities

The versatile E600 Series provides superior traction off-slab, where other electric boom lifts can't go.



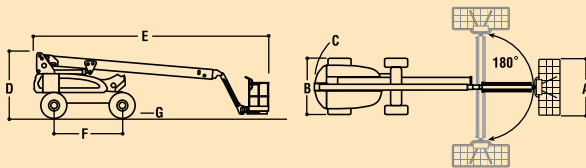
# JLG MODEL E600J, M600J & E600JP, M600JP

# PERFORMANCE FEATURES



## REACH SPECIFICATIONS

Platform Height	60 ft. (18.29 m)
Horizontal Outreach (Jib)	43 ft. 3 in. (13.19 m)
(JibPLUS)	44 ft. 5 in. (13.54 m)
Swing	400 Degrees Non-Continuous
Platform Capacity	500 lb. (237 kg)
Platform Rotator	180 Degrees Hydraulic
Jib (range of articulation)	145 Degrees (+75,-70) Vertical
(JibPLUS)	180 Degrees Horizontal



## DIMENSIONAL DATA

A. Platform Size	30 x 72 in. (0.76 x 1.83 m)
B. Overall Width	8 ft. (2.44 m)
C. Tailswing	4 ft. (1.22 m)
D. Stowed Height	8 ft. 4 in. (2.54 m)
E. Stowed Length (Jib)	30 ft. 9 in. (9.37 m)
(JibPLUS)	33 ft. 4 in. (10.15 m)
F. Wheelbase	9 ft. (2.74 m)
G. Ground Clearance (Axle)	12 in. (30 cm)
(Chassis)	23 in. (58 cm)
Gross Vehicle Weight*(Jib)	14,900 lb. (6,759 kg)
(JibPLUS)	15,200 lb. (6,895 kg)
Ground Bearing Pressure	52 PSI (3.7 kg/cm <sup>2</sup> )

## CHASSIS

Drive Speed	3.0 mph (4.8 kph)
Gradeability	30%
Turning Radius (Inside)	4 ft. (1.22 m)
Turning Radius (Outside)	15 ft. 4 in. (4.67 m)
Axle Oscillation	8 in. (20 cm)
Tire Size/Type	14 x 22.5 Non-Marking Pneumatic

## POWER SOURCE

Electrical System	48V DC
Batteries	8 x 6V 415 amp/hr
Drive Motors	Dual Electric Traction
Brakes	Automatic Spring Applied Multiple Discs
Hydraulic Motor/Pump	Series Wound Motor/Gear Pump
Hydraulic Reservoir	15 gal. (56.78 L)
Generator Set (M600J, M600JP)	Fully Automatic, 45 amp
	Yanmar 6 hp Diesel Engine
Engine Fuel Tank (M600J, M600JP)	13 gal. (49.3 L)
Generator Noise Level (at max. rpm)	70 dBA @ 7 meters

\*Certain options or country standards will increase weight.

## Standard Features

- 6 ft. (1.83 m) Articulating Jib
- 6 ft. (1.83 m) Vertical and Lateral Articulating Jib (E600JP and M600JP Only)
- Operator Tool Tray
- 30 in. x 72 in. (.76 x 1.83 m) side entry
- Low Mount Platform
- Inward Self-Closing Swing Gate
- 180 Degree Hydraulic Platform Rotator
- Platform Console Machine Status Light Panel\*
- 110V-AC GFI Receptacle in the Platform
- 5 Degree Tilt Alarm/Indicator Light
- Hourmeter
- Battery Condition Indicator
- Lifting/Tie Down Lugs
- 14 x 22.5 Non-Marking Pneumatic Tires
- 400 Degree Non-Continuous Rotation
- Removable Battery Box
- Oscillating Axle
- Manual Descent
- Automatic Traction Control (ATC)
- SCR Automatic Battery Charger
- All Motion Alarm

\*Provides indicator lights at platform control console for system distress, low fuel, 5 degree tilt light, and foot switch status.

## Individual Options:

- 30 x 48 in. Platform
- Mesh to Toprail – Bolt-on Aluminum
- 1/2 in. Airline to Platform
- 14 x 22.5 Non-Marking Foam Filled Tires
- 1200W Inverter
- Hostile Environment Kit<sup>1</sup>
- EE Rating<sup>2</sup>
- Tow Package<sup>3</sup>
- Light Package<sup>4</sup>
- Flashing Amber Beacon
- Platform Work Lights
- All Motion Alarm

1. Includes console cover, boom wipers and cylinder bellows.
2. Not available on Multi-Powered models.
3. 2WD only.
4. Includes head and tail lights, and platform worklights.

## The JLG "1 & 5" Warranty

JLG Industries, Inc. backs our products with our exclusive "1 & 5" Warranty. We provide coverage on all products for one (1) full year, and cover all specified major structural components for five (5) full years. Due to continuous product improvements, we reserve the right to make specification and/or equipment changes without prior notification. This machine meets or exceeds applicable OSHA Regulations in 29 CFR 1910.67, 29 CFR 1926.453 and ANSI A92.5-1992 as originally manufactured for intended applications.

## JLG Industries, Inc.

1 JLG Drive, McConnellsburg, PA 17233-9533  
 Telephone 717-485-5161 Toll-free in US 877-JLG-LIFT  
 Fax 717-485-6417  
 www.jlg.com

Printed in USA  
 FORM NO.: SS-E600-0303-10M  
 PART NO.: 3131027  
 R020501

